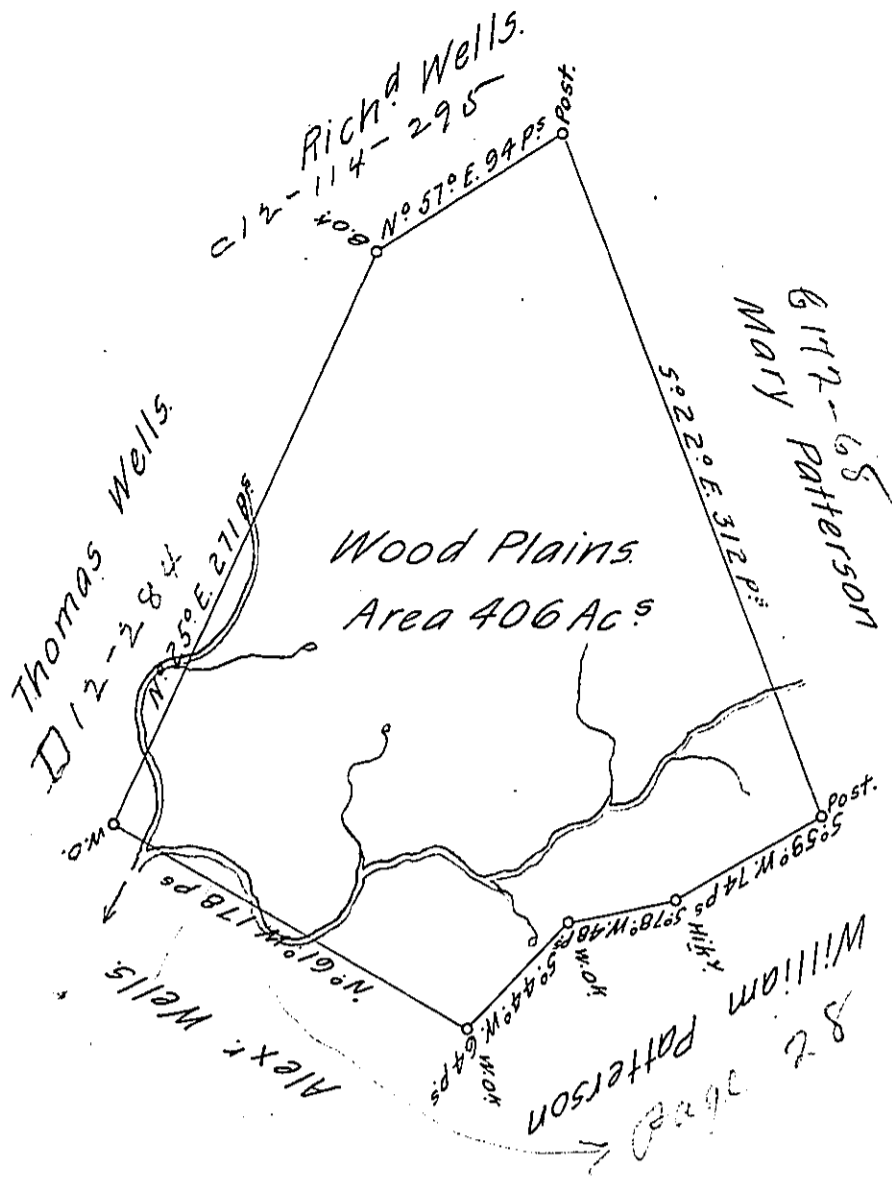


X
97
P14-14
1-51
3-170



A Draught of a Survey called "Wood Plains" situate on a Branch of Cross C^t, in Washington County, contain^g 406 Ac^s, strict Measure, executed Decem^r ye 7th 1786, in Consequence of a Certif^e for 400 Ac^s granted to Sam^l Patterson by ye Commiss^rs appointed by Virg^a to adjust ye Claims to unpatented Lands in the Counties—Monong^a Yohg^a and Ohio & duly entered with ye County Surv^r. as appears from the List of Entries transmitted from ye Sur. Gen^ls Office.

Presley Nevill, D. S^r.

Ent^d 25 June 1780.

ret^d 15 May 1787.

Jn^o Lukens Esq^r. S. G^t

IN TESTIMONY that the above is a copy of the original remaining on file in the Department of Internal Affairs of Pennsylvania, made conformably to an Act of Assembly approved the 16th day of February, 1833, I have hereunto set my Hand and caused the Seal of said Department to be affixed at Harrisburg, this eleventh day of June 1906.

Isaac R. Brown
Secretary of Internal Affairs.